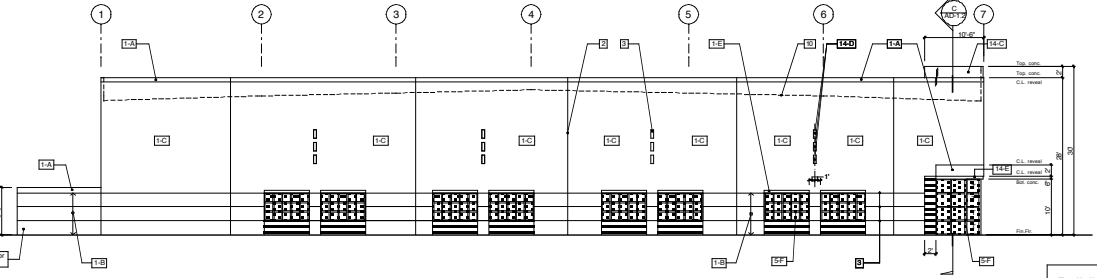


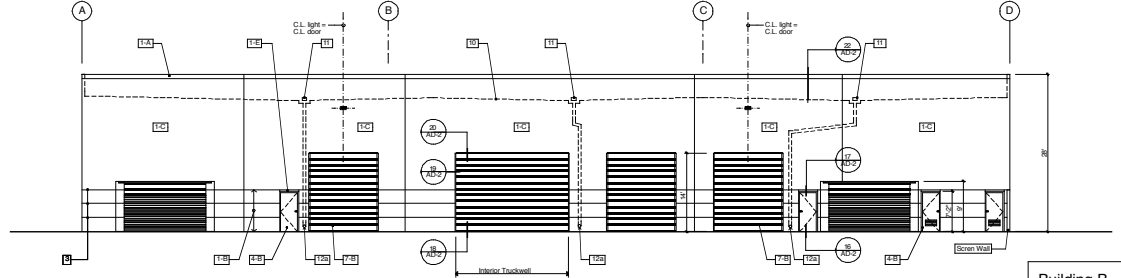
Building B - West Elevation

Scale:
1/8"=1'-0"



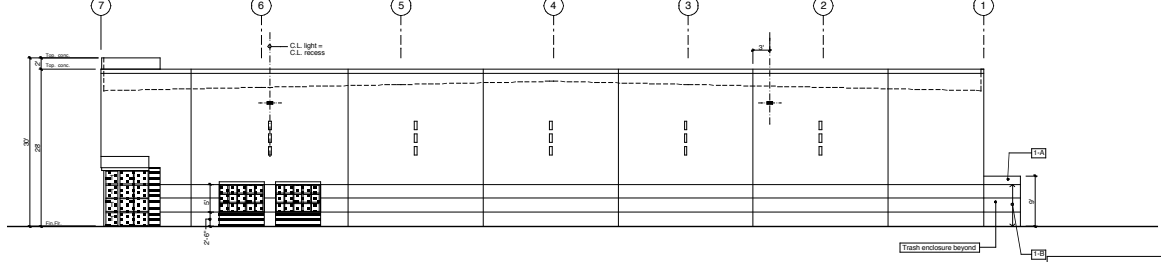
Building B - North Elevation

Scale:
1/8"=1'-0"



Building B - East Elevation

Scale:
1/8"=1'-0"



Building B - South Elevation

Scale:
1/8"=1'-0"

Exterior Material Key List

1. Painted concrete tilt-up panel
2. Typical panel joint
3. Typical reveal
4. Metal main door
5. Aluminum and glass storefront
6. Aluminum brake metal
7. Metal overhead roll-up door
8. 12" high Helvetica medium address numbers, recessed
9. Steel channel embedded in concrete
10. Line of roof beyond parapet
11. Overflow scupper
- 12a. Roof Drain, daylight thru panel @ 12" AFF.
- 12b. Roof drain under curb face or daylight to trough per site plan
13. Exterior life fixture
14. Decorative recess @ conc. panel - 3/4" deep except where adjacent to ribbed conc. - see detail 6/AD-2

Material Legend

- Ribbed Concrete 1/4" Acute Blue tinted glass in clear anodized aluminum mullion
- Panel concrete panel - see elevation for color. Remove small piece samples on wall for approval by owner prior to painting job.
- Recessed Ribbed concrete panel painted color A below (1/2" deep). Ribbed (see detail for Screen Wall) (submit sample to architect)
- Overhead roll-up door - see elevation for color
- Exterior life fixture - mount @ 22'-0"

Color Key List

- | | | |
|----------------|-------------------------|-------------------------------------|
| A. Dark grey | 1476 | NOTE: All colors are Benjamin Moore |
| B. Medium grey | 1474 | |
| C. Light grey | 1471 | |
| D. Accent | 655 | |
| E. Accent | 812 | |
| F. Mullion | Clear Anodized Aluminum | |
- Material Number
Color Letter

Planning Department	7-13-01
Department	
Planning Department	9-19-01
Corrections	
Consultant Package	3-12-03
Department	
Planning Department	3-18-03
Major Modification	
Planning Department	4-28-03
Building Department	
Examiner	5-29-03
Building Department	
Corrections	7-24-03

LANET / SHAW
ARCHITECTS INC.
11741 W. Pico Blvd.
Los Angeles, CA 90064
Phone 310 475-4775

Onward Maritime, Ltd.
599 Constitution Ave. Ste H
Camarillo, CA 93012
Architect/Contractor:
Martin Teitelbaum

Planning #
PZ 01-5-74
B I S S #
PC 03-3820/03-3819
Stamp

Project:
Onward Maritime, Ltd.
Lock 38 E 37th or 48th Bay
Onward, CA 93030
Sheets:
Buildin B Exterior Elevations

Date:
7-24-03
Scale:
As Noted
Project No.:
0224

Sheet No.:
A-3.2